



November 2007

New Reciprocating Machinery Protector

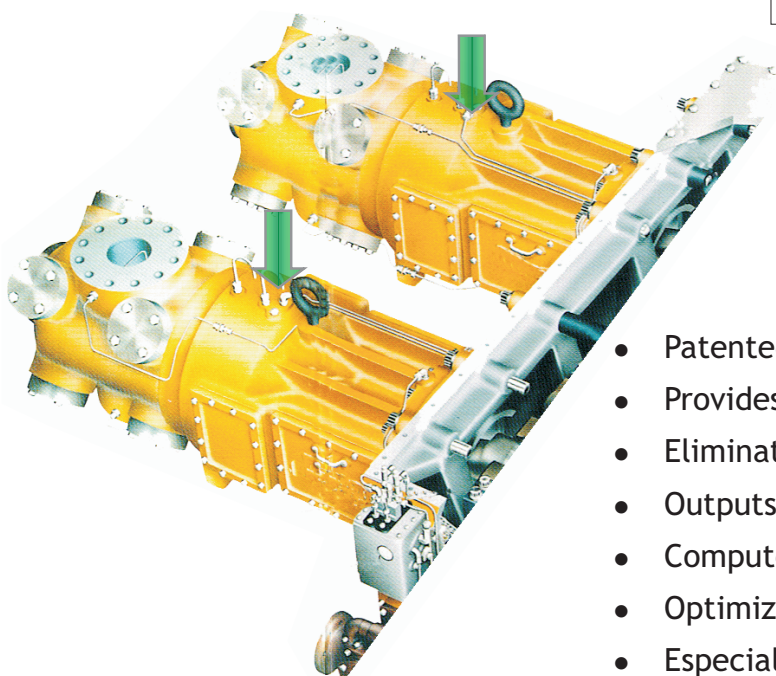
IMI Sensors, a division of PCB Piezotronics, Inc., manufactures industrial accelerometers, vibration sensors, 4-20 mA transmitters, and related accessories for predictive maintenance, condition monitoring, and machinery vibration analysis. The instrumentation is used to monitor bearings, gears, motors, spindles and other rotating machinery in harsh factory environments. All products are designed and manufactured in ISO 9001 certified facility of PCB in the U.S.A.

Structural Solutions Private Limited exclusively represents PCB Piezotronics, Inc., U.S.A in India. Structural Solutions Private Limited is a professional engineering company engaged in offering high end technology intensive products and system solutions to Indian Process industry for condition Monitoring and Predictive maintenance and Machinery vibration analysis.

Shock Measurement for Reciprocating Compressors

What can "shock" detect?

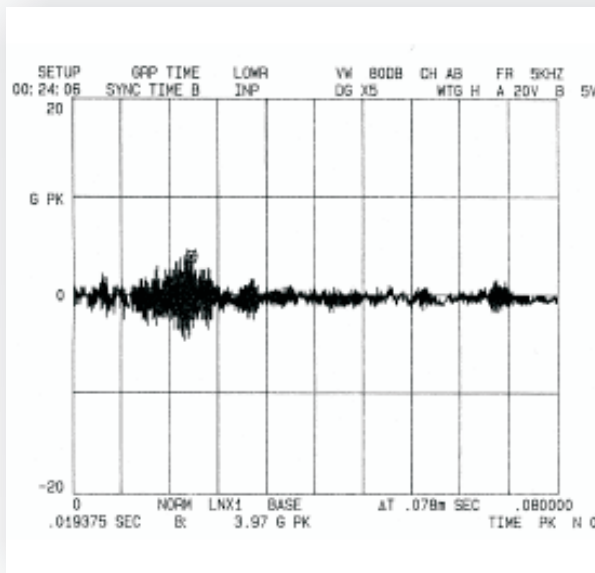
- Loose or broken bolts
- Loose or cracked rod nut
- Excessive Crosshead Clearance
- Excessive clearance in slipper
- Excessive clearance in connecting Pins
- Liquids in the process
- Debris in compressor cylinder



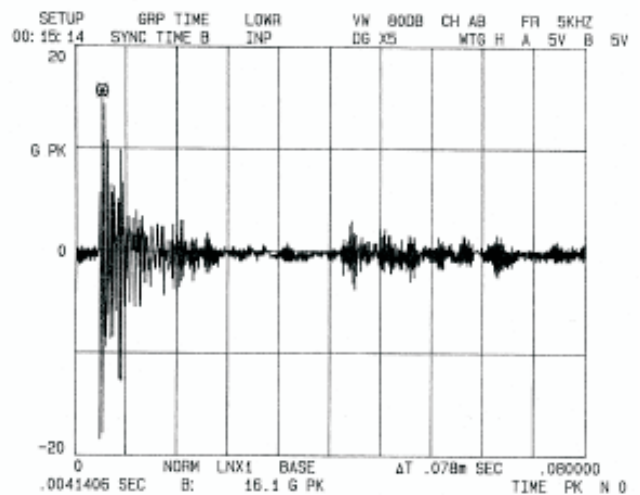
- Patented Design Outperforms Impact Transmitter
- Provides early warning
- Eliminates false trips
- Outputs a 4 -20 mA signal for trending
- Computer exclusive Reciprocating Fault Index
- Optimizes performance through USB programing
- Especially effective on reciprocating compressors

Shock Measurement for Reciprocating Compressors

Time waveform during one cycle

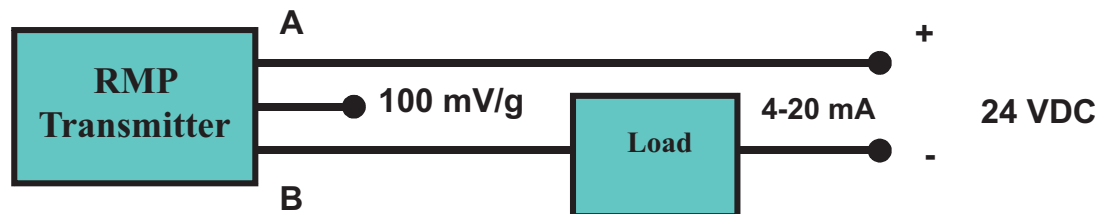


Without Significant Impacts



with Significant Impacts

Shock Measurement
for Reciprocating Compressors
RMP is 4-20 mA loop powered unit



2 pin 4-20 mA –standard

3 pin - 4-20 mA & 100 mV/g- option

For further product & application details please contact

Structural Solutions Private Limited



301 & 303 - Eldorado Estate, 3-6-526
Himayath Nagar, Hyderabad-500 029
Ph:040-2763 6433 , 2762 0569
Fax:040 -2763 6435



Branches

Bangalore * Chennai * Delhi * Hyderabad * Kolkata * Mumbai * Pune

Email: sales@stsols.com URL: www.stsols.com